

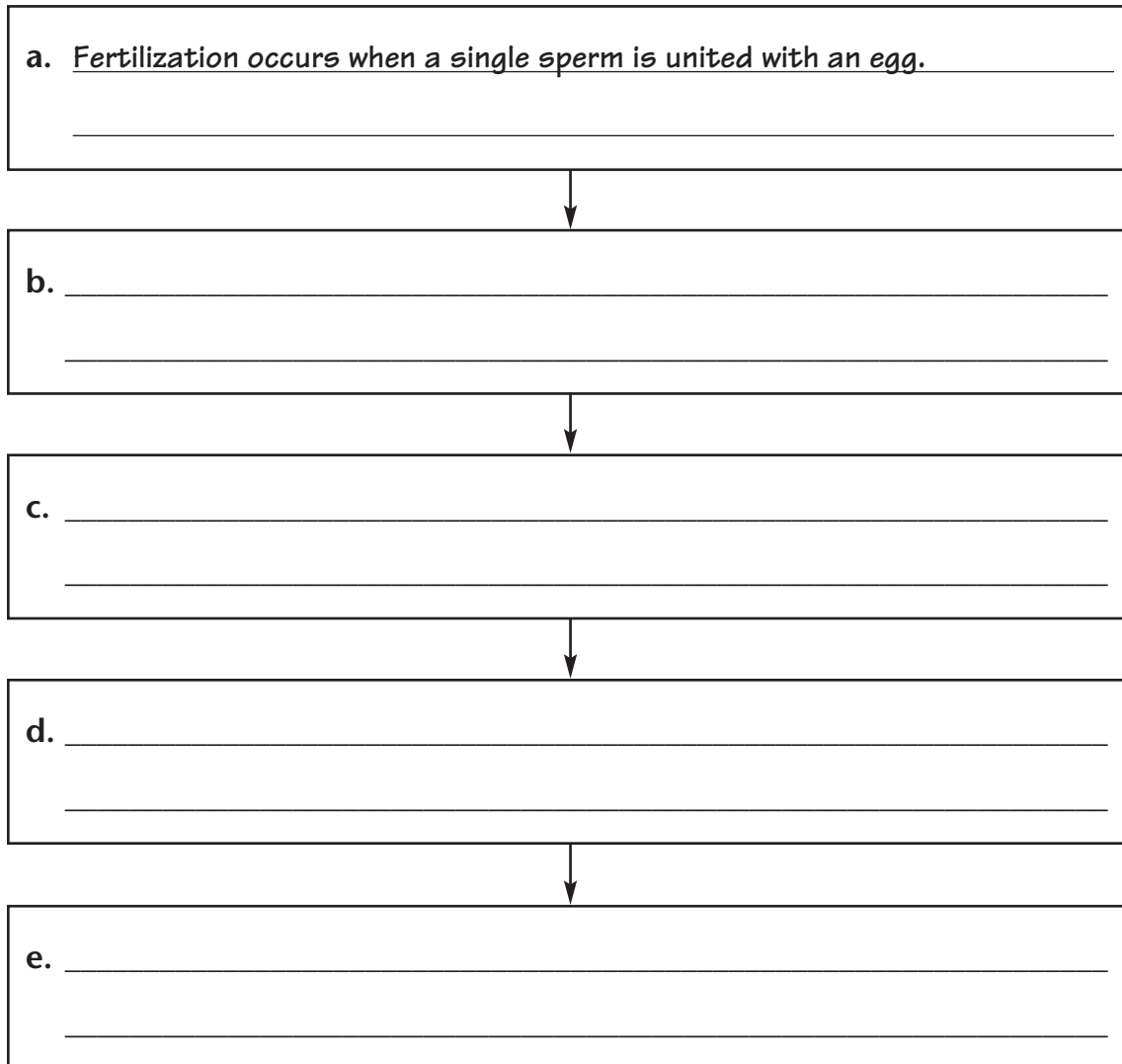
**Section 19-1**

# **Note Taking Guide**

## **Development Before Birth** (pp. 488–491)

### **The Beginning of the Life Cycle**

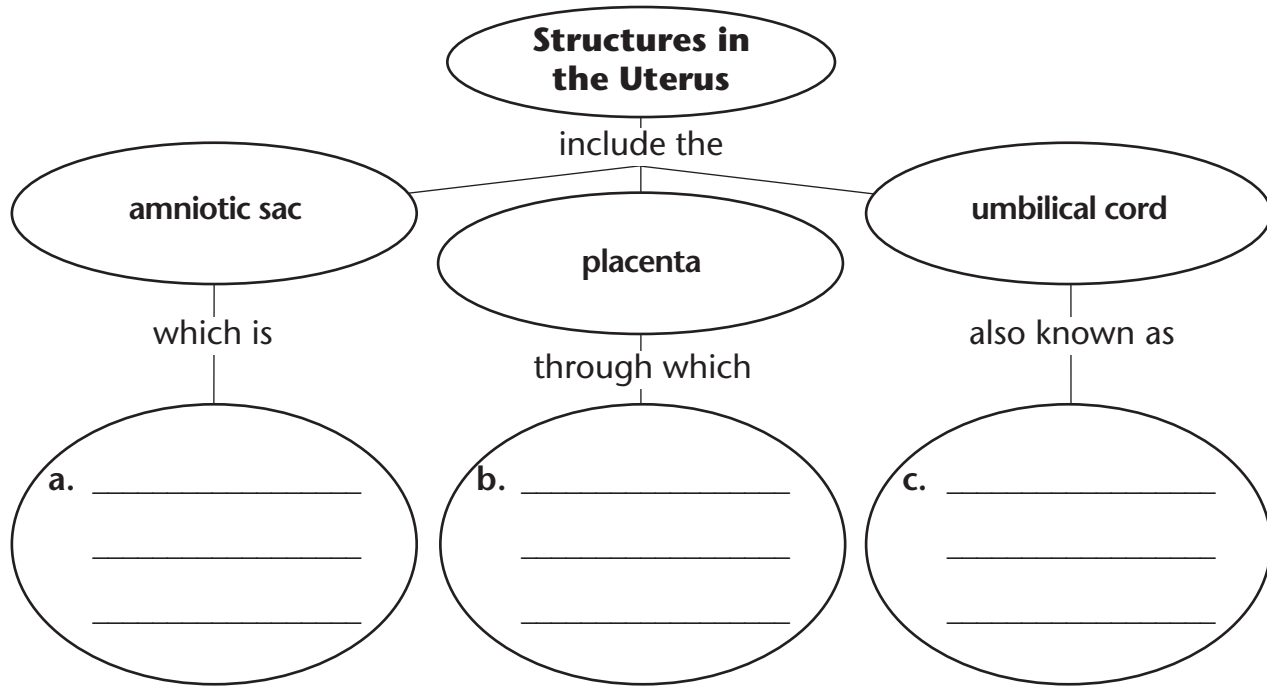
1. Complete the flowchart about the early stages of pregnancy.



**Section 19-1: Note Taking Guide** *(continued)*

**Development in the Uterus**

2. Complete the concept map about the structures that surround a growing embryo.



3. Complete the table about different stages of embryonic and fetal development.

Stage	Characteristics
0–2 months	a. _____ _____
3–6 months	b. _____ _____
7–9 months	c. _____ _____

**Section 19-2** *Note Taking Guide*

**A Healthy Pregnancy** (pp. 492–496)

**Staying Healthy During Pregnancy**

1. Complete the table with details about staying healthy during pregnancy.

Behavior	Effect
Getting enough folic acid during pregnancy	a. _____ _____ _____
Getting regular exercise during pregnancy	b. _____ _____ _____
Avoiding all alcohol during pregnancy	c. _____ _____ _____
Avoiding cat litter during pregnancy	d. _____ _____ _____

**Prenatal Care**

2. For each trimester of pregnancy, give one example of a routine procedure performed during a prenatal visit.

- a. First trimester \_\_\_\_\_
- b. Second trimester \_\_\_\_\_
- c. Third trimester \_\_\_\_\_

Name \_\_\_\_\_ Class \_\_\_\_\_ Date \_\_\_\_\_

**Section 19-2: Note Taking Guide** *(continued)*

3. List and describe three technologies doctors may use to monitor a pregnancy.
- a. \_\_\_\_\_
  - b. \_\_\_\_\_
  - c. \_\_\_\_\_
4. Complete the table about complications of pregnancy.

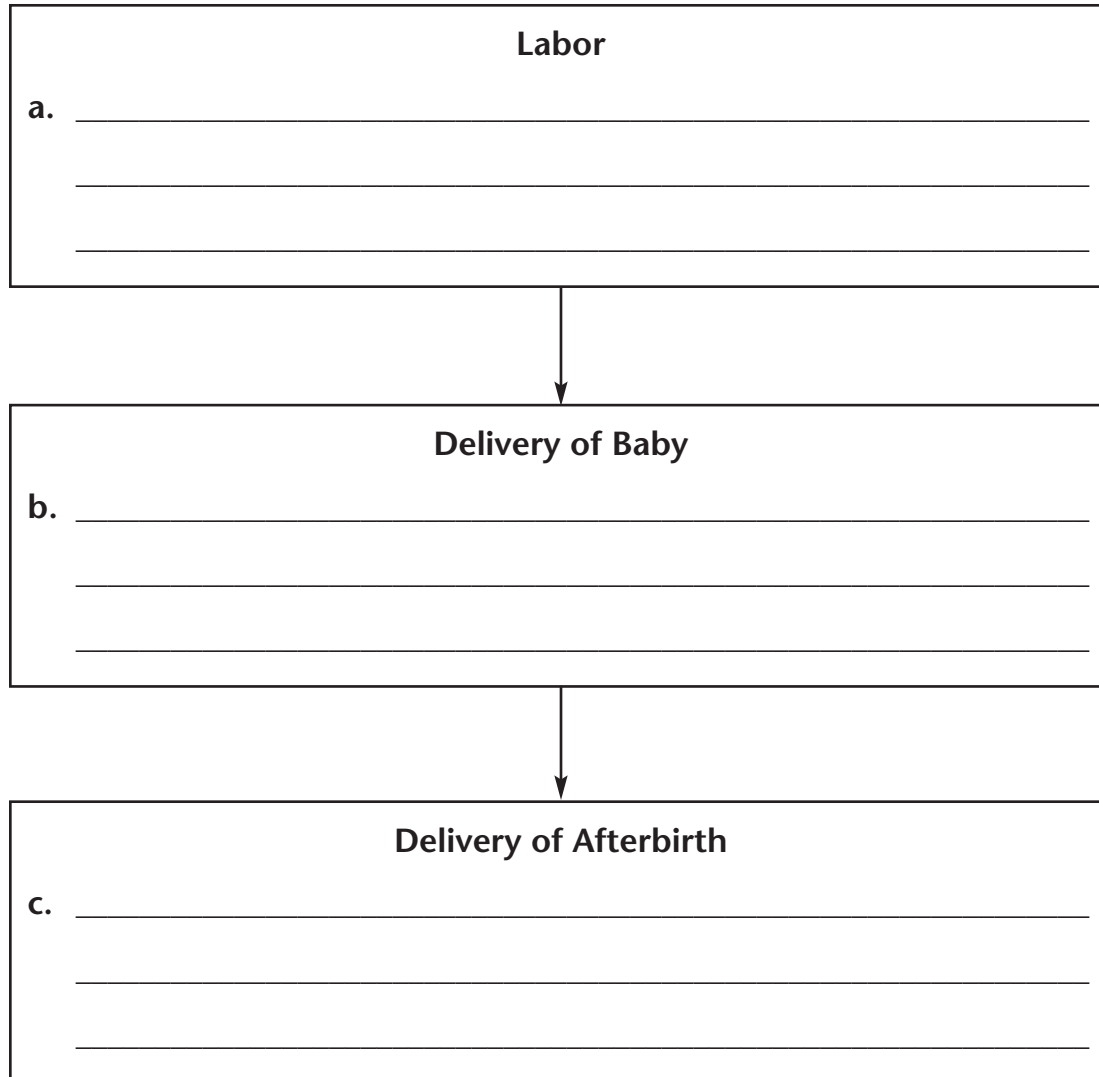
Complication	Description
a. _____ _____	blastocyst implants in the fallopian tube; surgery is needed to remove the embryo
b. _____ _____	embryo dies in the first 20 weeks of pregnancy; usually caused by a serious genetic defect
c. _____ _____	high blood pressure, swelling of the wrists and ankles, and high levels of protein in the urine; prevents fetus from getting enough oxygen; treated with bed rest or medication
d. _____ _____	woman develops high blood sugar levels; if left untreated, fetus may grow too large

**Section 19-3** ***Note Taking Guide***

**Childbirth** (pp. 498–503)

**The Birth Process**

1. Complete the flowchart about the birth process.



2. Put a check mark next to the correct answer.

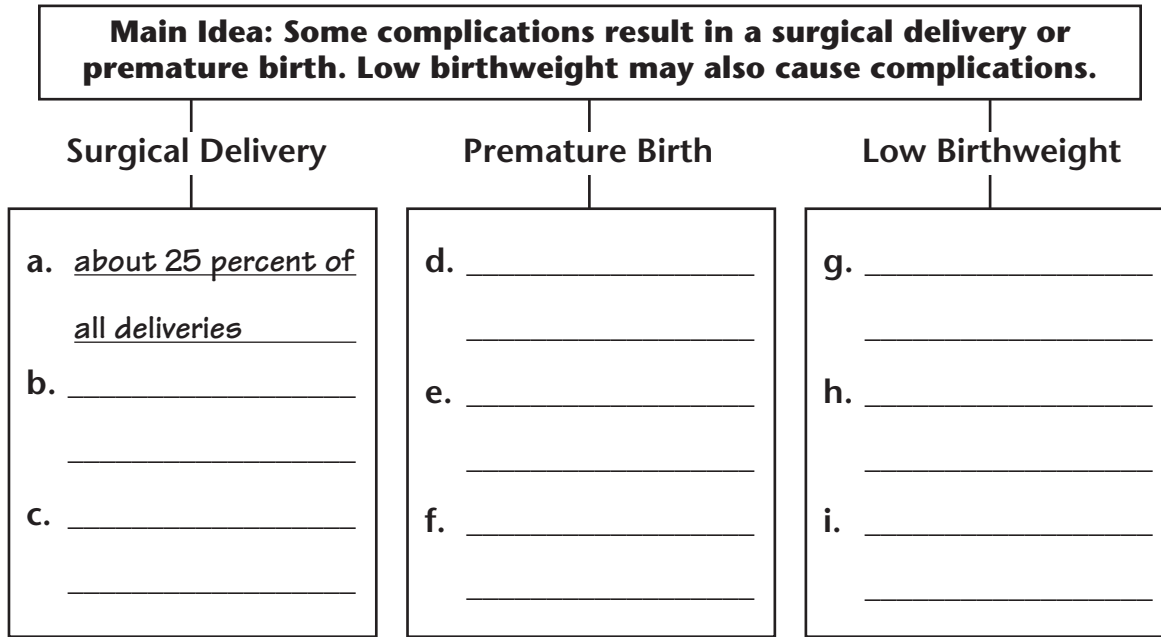
The time after birth in which the newborn and the parents adjust is called

- \_\_\_\_\_ a. the post-birth period.
- \_\_\_\_\_ b. the postpartum period.
- \_\_\_\_\_ c. the afterbirth.

**Section 19-3: Note Taking Guide** *(continued)*

**Complications at Birth**

3. Complete the graphic organizer with details about complications at birth.



**Multiple Births**

4. Complete the table about the different types of twins.

Type of Twins	Description
a. _____	A single fertilized egg divides into two identical embryos early in development.
b. _____	Two eggs are released from the ovary and are fertilized by two different sperm.

**Section 19-4**

# **Note Taking Guide**

## **Childhood** (pp. 506–508)

### **Early Childhood**

1. Complete the flowchart about early childhood.

<b>Birth to Eighteen Months</b>
a. _____ _____
b. _____ _____

↓

<b>Eighteen Months to Three Years</b>
c. _____ _____
d. _____ _____

↓

<b>Three to Six Years</b>
e. _____ _____
f. _____ _____

**Section 19-4: Note Taking Guide** *(continued)*

**Middle and Late Childhood**

2. Complete the concept map with details about middle and late childhood.

